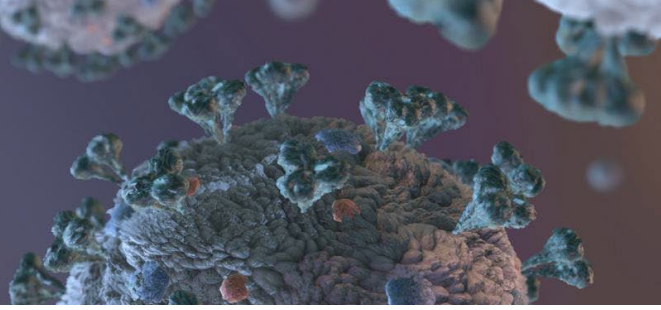


# Monitoring of disease progression - detection of cytokine storm on COVID-19 patients



## Ella™ Simple Plex ELISA

Ella's combination of performance and workflow brings your immunoassays to the next level. In just **90 minutes** you get **highly reproducible** validated assay data with no manual steps. The assay performance behind that data includes **sub-picogram level sensitivity, 4+ logs** of dynamic range and **reproducibility** that rivals the best laboratory automation. All in a compact package that doesn't break your budget or your lab bench.

### Feature & Benefit

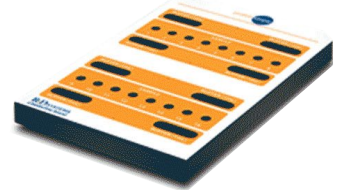
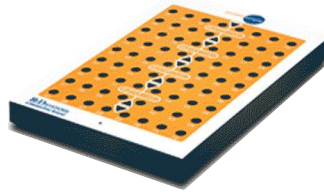
- Fast** and suitable for **monitoring cytokine storm (70 minutes automatic ELISA workflow with 10 minutes sample preparation)**
- Saving time (No need to pipette standard curve.** Standard curve already embedded as **barcode** in the cartridge).
- Saving sample** (Small sample volume is needed to run the assay. **Only 25 uL** sample maximum in 25 uL in sample buffer).
- Reliable assay (No cross contamination** in the assay. Each parameter has their own channel separate from others).

Format 16x4 Cartridge (16 sampel 4 parameter)

COVID-19 CYTOKINE ANALYSIS PANEL	
Cat. No	Parameter Uji (4)
SPCKA-PS-003229	IL-1β/IL-1F2, IL-6, IL-8/CXCL8, TNF-α

Format 32x8 Cartridge (32 sampel 8 parameter)

COVID-19 CYTOKINE ANALYSIS PANEL	
Cat. No	Parameter Uji (4)
SPCKE-PS-003426	IFN-gamma 3rd Gen, IL-1b, IL-2, IL-4, IL-6 2 <sup>nd</sup> Gen, IL-10, IL-12p70, TNF-a 2nd Gen



## Quantikine® ELISA Kit

R&D Systems Quantikine ELISA Kits are **complete** and **ready-to-use kit**. Immunoassays are available for **measuring** a range of molecules including **cytokines, chemokines, growth factors, proteases**, and more.

Antiviral cytokines	Cat. No	Description
IFN-α	41100-1	Human IFN-alpha ELISA Kit
IFN-β	DIFNB0	Human IFN-beta Quantikine ELISA Kit
IFN-γ	DIF50	Human IFN-gamma Quantikine ELISA Kit
IL-12p40	D2300B	Human IL-23 Quantikine ELISA Kit
Inflammatory cytokines and chemokines	Cat. No	Description
TNF-α	DTA00D	Human TNF-alpha Quantikine ELISA Kit 4th Gen
IL-6	D6050	Human IL-6 Quantikine ELISA Kit
RANTES	DRN00B	Human CCL5/RANTES Quantikine ELISA Kit
MIP-1α	DMA00	Human CCL3/MIP-1 alpha Quantikine ELISA Kit
MCP-1	DCP00	Human CCL2/MCP-1 Quantikine ELISA Kit
IL-1 beta	DLB50	Human IL-1 beta/IL-1F2 Quantikine ELISA Kit
IL-8	D8000C	Human IL-8/CXCL8 Quantikine ELISA Kit



### Feature & Benefit

- Complete ready to use kits
- Superior quality and reproducibility
- Detailed protocol and data include precision, recovery, linearity, sensitivity, and sample value data
- Colorimetric detection



# Monitoring of disease progression – detection of cytokine storm on COVID-19 patients

## Luminex assays

R&D Systems' Luminex assays have the largest, most flexible Luminex analyte menu available- ensuring every data point generated is meaningful to your research- optimizing the use of both your sample and your budget. Luminex allows you to analyze **multiple target** of proteins in **single run** which **saves time, cost and labor**.

Cat. No	Description
FCSTM18	<b>Human cytokine 45-plex panel</b> (CCL2/JE/MCP-1, CCL3/MIP-1 alpha, CCL4/MIP-1 beta, CCL5/RANTES, CCL11/Eotaxin, CCL19/MIP-3 beta, CCL20/MIP-3 alpha, CD40 Ligand/TNFSF5, CX3CL1/Fractalkine, CXCL1/GRO alpha/KC/CINC-1, CXCL2/GRO beta/MIP-2/CINC-3, CXCL10/IP-10/CRG-2, EGF, FGF basic/FGF2/bFGF, Flt-3)
LKTM008	<b>Th1/Th2 panel</b> (GM-CSF, IFN-gamma, IL-1 beta/IL-1F2, IL-2, IL-4, IL-5, IL-6, IL-10, IL-12 p70, IL-13, TNF-alpha)
LKTM009	<b>Th9/Th17/Th22 panel</b> (CCL20/MIP-3 alpha, CD40 Ligand/TNFSF5, GM-CSF, IFN-gamma, IL-1 beta/IL-1F2, IL-2, IL-4, IL-5, IL-6, IL-10, IL-12 p70, IL-13, IL-15, IL-17/IL-17A, IL-17E/IL-25, IL-33, TNF-alpha)
FCSTM21	<b>Primate cytokine 36-plex panel</b> (BDNF, GM-CSF, IL-10, CCL2/JE/MCP-1, Granzyme B, IL-12p70, CCL5/RANTES, IFN-alpha, IL-13, CCL11/Eotaxin, IFN-beta, IL-15, CCL20/MIP-3 alpha, IFN-gamma, IL-17/IL-17A, CD40 Ligand/TNFSF5, IL-1 beta/IL-1F2, IL-21, CXCL2/GRO beta/MIP-2/CINC-3, IL-2, PD-L1/B7-H1, CXCL10/IP-10/CRG-2, IL-4, PDGF-AA, CXCL11/I-TAC, IL-5, PDGF-BB, CXCL13/BLC/BCA-1, IL-6, TGF-alpha, FGF basic/FGF2/bFGF, IL-7, TNF-alpha, G-CSF, IL-8/CXCL8, VEGF)



### Feature & Benefit

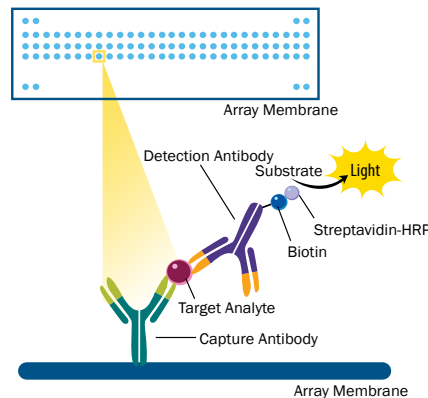
1. Analyte flexibility with the largest, mix and match menu on the market
2. Faster time to results with premixed beads sets
3. Performance validated and tested
4. Fast delivery times
5. Flexible: Pick and choose from 100s of analytes across multiple species.

## Proteome Profiler Antibody Array

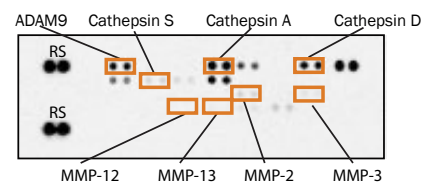
Proteome Profiler™ Antibody Arrays offer a **quick** and **inexpensive analysis** of **multiple analytes** in a simple assay. It allows the measurement of **up to 119 proteins** in a **single sample**. These arrays require **no specialized equipment** and eliminate the need for multiple Western blot experiments. Antibody array kits contain buffers, detection antibodies, and membranes spotted in duplicate with **high quality capture antibodies**. The arrays utilize chemiluminescence for detection and membranes can be assessed for protein levels in the same manner as traditional Western blots.

### Feature & Benefit

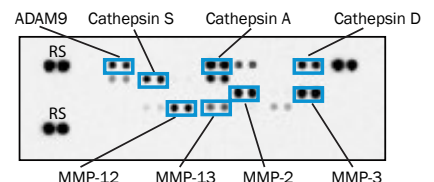
1. Quick & Inexpensive analysis
2. Detects up to 119 proteins in a single sample
3. Ready to use membrane and reagents
4. Available for chemiluminescence and fluorescence detection
5. Many variety of pathway or analysis that you can choose for human, mouse or rat



### A. Untreated



### B. IL-1α + OSM Treated



Cat. No	Description	Literature/Application
ARY022B	Proteome Profiler Human XL Cytokine Array Kit	Monitor inflammation after infection
ARY005B	Proteome Profiler Human Cytokine Array Kit	